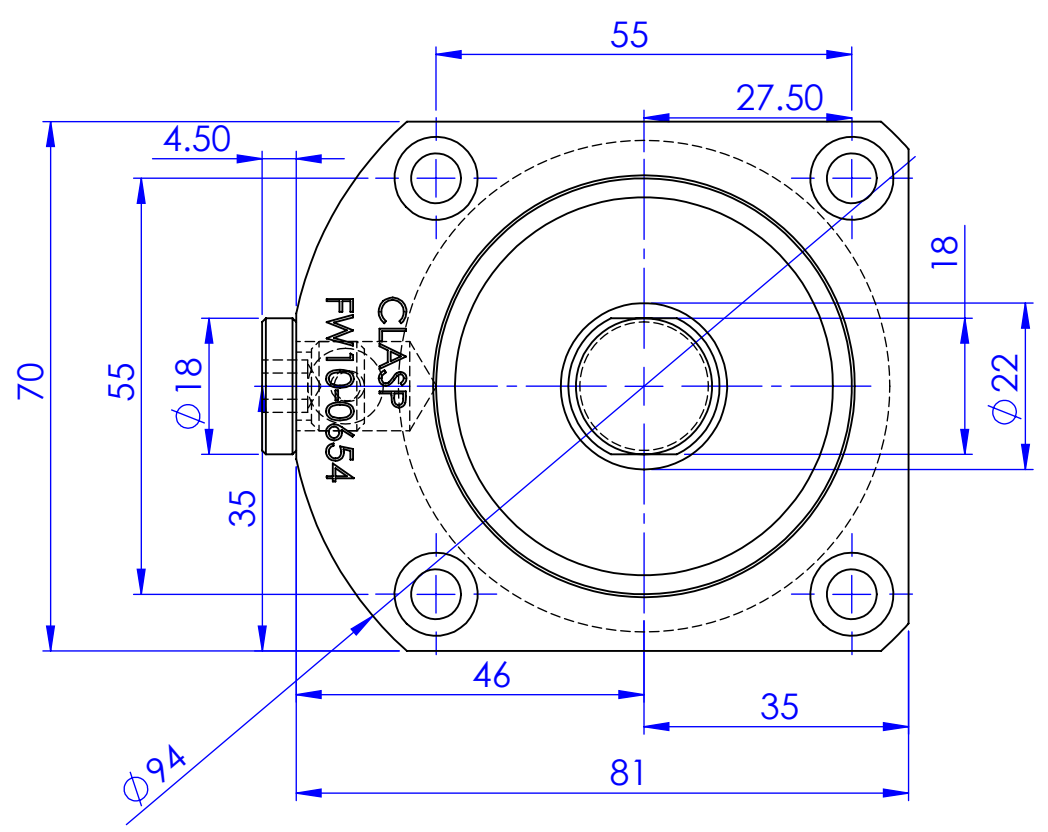
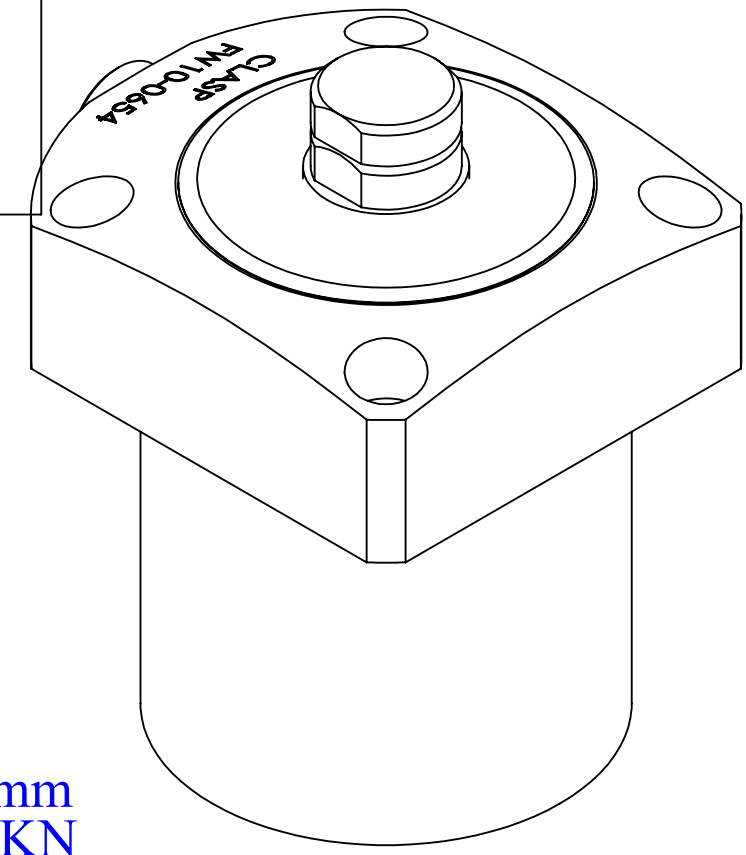
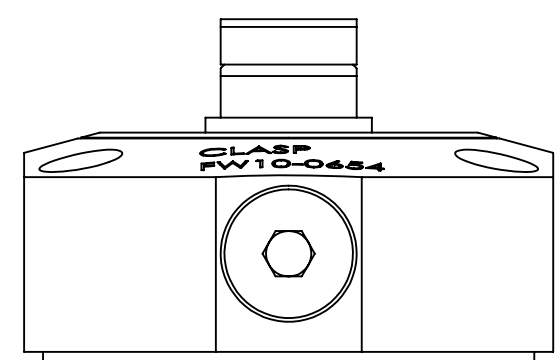
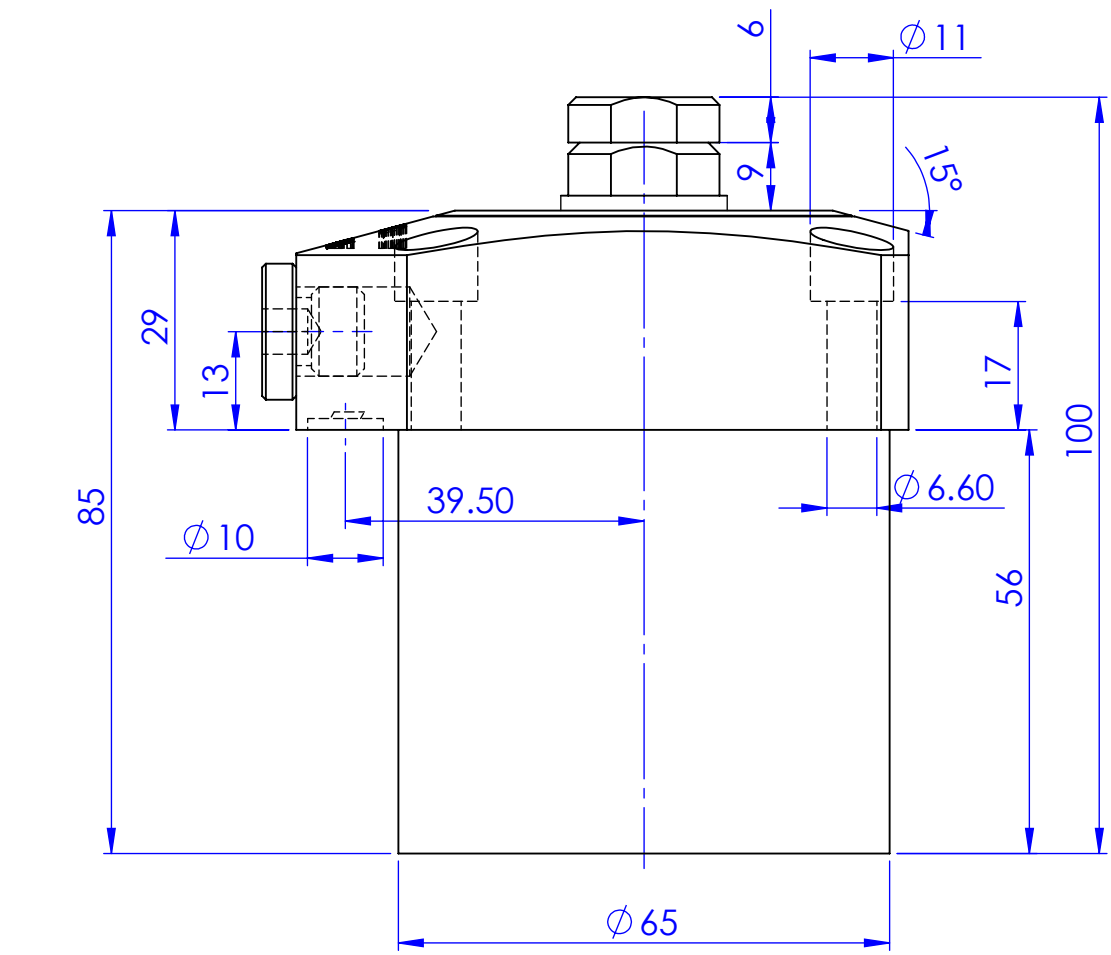





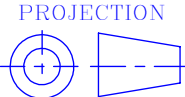


DEBURR



FW10-0654
Plunger Stroke - 14mm
Support force @70bar - 21KN

Surface Finish																ZONE	SCALE	1:1		
Ra Value μm	0.025	0.05	0.1	0.2	0.4	0.8	1.6	3.2	6.3	12.5	25	50	100			MATERILAS				
Ra Symbol	N1	N3	N2	N4	N5	N6	N7	N8	N9	N10	N11	N12								
																	GROUP No:—	WEIGHT		
																	FW10	Wt.Kgs		
			DESCRIPTION													Qty.		Casting/forging/ welding drg.no		
Drawn	Prabhakar		<div>DESCRIPTION</div> <div>FW10-0654</div> <div>Work support</div>													01				
Checked	Prabhakar																			
Approved	19/09/21															Drawing NO				
Date	19/09/21																			
Clamping elements type			<div>CLASP</div> <div>BANGALORE-72</div>													SHEET: 1 of 1		Sheet No: 1/1		

General Tolerance where not specified									
Liner - length or Diameter					Angular-length of shoter side of the angle				
0.5-6	6-30	30-120	120-315	315-1000	1000-2000	Upto 6	6-30	30-120	120-400
±0.1	±0.2	±0.3	±0.5	±0.8	±1.2	±1°	±30°	±10°	±20°